



SOUTHERN CALIFORNIA HORTICULTURAL SOCIETY

Where passionate gardeners meet to share knowledge and learn from each other.

socalhort.org

NEWSLETTER

August 2022

OUR NEXT HYBRID MEETING

Thursday, August 11

Announcements at 7:10 p.m.

Plant Forum at 7:15 p.m.

Program at 7:30 p.m.



Visit: www.socalhort.org
for registration info.

SCHS WELCOMES NEW MEMBERS

Please say "hello" to:

Michaela Burschinger
Judy and John Campbell
Margaret Campbell
Terence Huang
Jacqueline Seidman
Grant and Liz Smith

We're happy you've joined us!

CONNECT WITH SCHS

Please engage with us online!

YOU CAN FIND US AT:

www.socalhort.org
www.facebook.com/pg/socalhort
www.instagram.com/socalhort



*All membership options
are listed on our website.*

IN THIS ISSUE

August Program and Membership News	1
July Recap, CITG Summary and Garden Share	2
Horticultural Happenings and 2022 HOTY News	3
Upcoming Programs and SCHS Contact info.	4

Micro-Forests in Los Angeles

PLEASE NOTE: Proof of vaccination and booster will be required to attend this live meeting, and masks are strongly recommended to be worn indoors. For the safety of our members, we will be adhering to current L.A. County Health Department guidelines.

On August 11 the Southern California Horticultural Society will be hosting Katherine Pakradouni, a native plant horticulturist and educator, who will speak to us (both in-person and streaming) about

urban micro-forests. Her program will serve as an introduction to the Miyawaki afforestation method and its applicability for ecological restoration, biodiversity enhancement, as well as community engagement in urban Los Angeles. She designed L.A.'s first micro-forest project in Griffith Park, and will be looking at it as a case study to aid in explaining this concept.

Pakradouni will share how, in the 1970s, Japanese botanist and ecologist Akira Miyawaki, pioneered his method of creating indigenous micro-forests all over the temperate and tropical world as a tool to address climate change and restore biodiversity in urban areas. She will explore the big-picture topic of the significance and impact of micro-forests in L.A. and provide insights into how this international method can be adapted for use in our drier, Mediterranean climate. Since the installation of the Griffith Park project in June of 2021, interest has been growing to install more micro-forests

in different areas throughout L.A. to facilitate wildlife connectivity, restore ecological health, and increase access to nature in our city.

We are looking forward to learning about the Miyawaki Method – and how variations of this method may be used to mitigate current ecological challenges – from a horticulturist experienced in the practice. Pakradouni currently works for the National Park Service/Santa Monica Mountains Fund as the nursery manager for the Liberty Canyon Wildlife Crossing, is the Council District 4 representative of the Community Forest Advisory Committee, and also consults privately on numerous habitat enhancement projects throughout L.A.

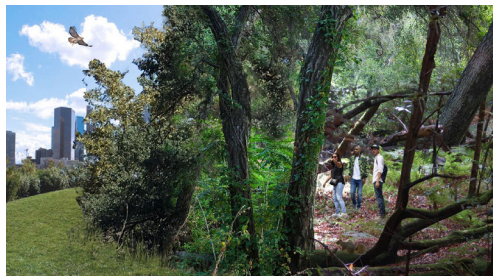


Photo-illustration of an urban micro-forest. Credit: Asher Guzik

This intriguing topic is one of timely significance to all urban gardeners. We invite you to experience this presentation in person, or you may register to see it online at: www.socalhort.org. We hope that you will be able to join us.

MEMBERSHIP NEWS

SAVE THE DATE: SEPTEMBER 17 2022 HOTY EVENT

Plans are being finalized for the 2022 Horticulturist of the Year Awards Banquet honoring Dave Fross of Native Sons Nursery. See page 3 for updated details on the evening's activities.



SCHS' 85th ANNIVERSARY

2022 marks the society's 85th anniversary and the SCHS board is working on a special presentation to honor this milestone. As a leading horticultural organization that seeks "to share knowledge" we will be reminiscing about our beginnings – from our long association with the L.A. County Arboretum to the hundreds of scholarships/internships we have supported over the years – and looking to the future legacy we are building through programs such as the Ruth Borun Lecture Series. **STAY TUNED!**



NEW BOARD OFFICERS

Please see Page 4 for the new slate of board officers whose terms began in July. Several committee assignments are pending and will be updated soon.

On July 14, the SCHS hosted local architect Brian Tichenor, who educated and inspired us with his program on renowned 20th century Southern California landscape architect Ralph Cornell. His talk, presented with archival images, documented a small portion of the voluminous body of Cornell's work and its impact on Southern California landscapes from the 1920s into the 1960s. In addition to being the most prolific and influential of the first generation of professional SoCal landscape architects, Cornell was also a persuasive public voice for the promotion of native landscapes and dry gardening, and Tichenor stressed that this influenced the changing dynamics of regional attitudes about landscape and water usage.

Tichenor began by noting that today, out of necessity, gardens and public spaces need to be designed giving consideration to their ability to survive with low-water usage. He then shared an article Cornell wrote in 1912, proposing that parks be planted "for maximum results, using a minimum of expenditure" using California native plants. Tichenor noted that this type of thinking led to Cornell becoming a pioneer in creating a specific regional look in SoCal that was distinct from East Coast landscaping standards.

Upon Cornell's graduation from Pomona College and Harvard, he began to question the established "rules" of landscape architecture. After turning down a position with the Olmsted brothers, Cornell instead established a business in partnership with Theodore Payne. Together they worked on the grounds of Pomona College, numerous parks throughout Pasadena, and ultimately, Torrey Pines State Natural Reserve in La Jolla. The latter was the first project of its kind built around the existing environment, and included instructions on how to deal with future expansion to accommodate greater populations. After he and Payne parted ways, Cornell expanded his oeuvre to include city planning (Beverly Park in Beverly Hills), civic projects (La Brea Tar Pits, UCLA grounds), restoration landscaping (Los Cerritos Ranch House in Long Beach), consulting on Griffith and Elysian Parks, as well as some residential jobs.

In addition to his landscaping career, Cornell was an author, a radio talk show host, and most notably, an accomplished photographer. Not only did he meticulously document his own projects, but the



aesthetic qualities of his landscape photos can also be found (often uncredited) in the books of horticultural contemporaries such as Victoria Padilla's *Southern California Gardens: An Illustrated History* and Mildred Mathias' *Flowering Plants in the Landscape*.

Tichenor concluded by summarizing Cornell's career as one that evolved during an incredibly expansive time of growth for California and its landscapes. Staying on pace with the changing times, Cornell was always growing and learning, yet still adhering to his unique design principles, including the critical placement of trees to anchor large spaces and recognizing the significance of water usage.

A recording of Tichenor's program and his follow-up Q & A can be found on our YouTube channel. Sabine Steinmetz

Link to view entire program:

<https://www.youtube.com/watch?v=ZxAflJjU1-U>

RETURN OF SCHS RAFFLE

In addition to enjoying Tichenor's program, those who attended the live meeting in July were once again able to purchase raffle tickets

Photo courtesy of Steve Gerischer



for a chance to win pots from a large and colorful selection donated by long-time member Joan Citron. In addition to being a bit of fun, the raffle provided a sneak peek at the types of items that might be found at our upcoming Silent Auction - an event Citron is known for heavily contributing to!

Thanks Joan!

EDITORIAL CORRECTION

In the June newsletter's recap of Bart O'Brien's program, the term "nativar" was incorrectly defined. O'Brien himself has since provided us with the following description for clarification:

A nativar is simply a cultivar of a native plant, not limited to those that are the result of a breeding program or are hybrids. The term applies to plants selected from the wild as well.

We apologize for any confusion and appreciate O'Brien for providing us with the correct definition. Editor



GETTING WATER WISE
with Debby Dunn
at Arlington Garden

Photo provided by speaker.

On July 10, the SCHS partnered with Arlington Garden in Pasadena to host Debby Dunn, the water conservation administrator for the City of Beverly Hills, in presenting a workshop on how to use water responsibly during our ongoing drought.

Dunn's common-sense tips included:

- Cut back on number of days you irrigate and water more deeply when you do.
- Consider swapping sprinkler heads for more efficient, less wasteful options.
- Always check for leaks (indoors & out) and make necessary adjustments.
- Stay informed! Visit water-wise gardens, speak to experts, take classes or check out the following websites:

BeWaterWise.com • SoCalWaterSmart.com
SaveOurWater.com

You may also contact Dunn directly at:
GardenGalDeb@Gmail.com

The SCHS appreciates Dunn for speaking to us - and Arlington's liaison, Heather, for her coordination of the event - as well as for giving attendees a short garden tour afterward. It was a morning well spent in good company.

Many thanks!

SCHS MONTHLY GARDEN SHARE

August is going to get hot - so protect yourself & your plants!

- Do any supplemental watering as early and deeply as possible.
- Avoid planting, heavy pruning and most fertilizing this month - your plants (and you) need a rest.
- Continue dead-heading, weeding and mulching if you need to, but limit your activities & stay hydrated!
- Start planning for fall planting and chores - preferably from indoors!

Sabine Steinmetz

Learn more about SCHS and connect with us online at:
www.facebook.com/pg/socalhort • www.instagram.com/socalhort • www.socalhort.org

AUGUST HORTICULTURAL HAPPENINGS • 2022 SCHS HOTY

Venues open at press time are marked  and  for those that are online only.

Organizations are offering events, both online and in person, but may have updated protocols in place.

Please continue to check with your favorites for current info if you are planning a visit.

ARLINGTON GARDEN

275 Arlington Drive, Pasadena 91105
626-578-5434
www.arlingtongardenpasadena.com

CALIFORNIA BOTANIC GARDEN

(formerly RANCHO SANTA ANA)
1500 N. College Ave., Claremont 91711
909.625.8767 www.calbg.org

CALIFORNIA NATIVE PLANT SOCIETY

SAN GABRIEL MOUNTAINS CHAPTER
1750 N. Altadena Dr., Pasadena 91107
818.398.5420 www.cnps-sgm.org

CALIFORNIA NATIVE PLANT SOCIETY

L.A. / Sta Monica Mtns Chapter / Sepulveda Garden Ctr
16633 Magnolia Blvd., Encino 91436
818-782-9346 www.lasmmcnps.org

DESCANSO GARDENS

1418 Descanso Drive, La Canada 91011
818.949.7980 www.descansogardens.org

EATON CANYON NATURE CENTER

1750 N. Altadena Dr., Pasadena 91107
626.398.5420 www.ecnca.org

FULLERTON ARBORETUM

1900 Associated Road, Fullerton 92831
657.278.3407 www.fullertonarboretum.org

HUNTINGTON BOTANICAL GARDENS

1151 Oxford Road, San Marino 91108
626.405.2100 www.huntington.org

LOS ANGELES COUNTY ARBORETUM

301 N. Baldwin Ave., Arcadia 91007
626.821.4623 www.arboretum.org

NATURAL HISTORY MUSEUM OF L.A.

900 Exposition Blvd., Los Angeles 90007
213.763.3466 www.nhm.org

RANCHO LOS ALAMITOS

6400 E. Bixby Hill Rd., Long Beach 90815
562.431.3541 www.rancholosalamitos.org

RANCHO LOS CERRITOS

4600 Virginia Road, Long Beach 90807
562.206.2040 www.rancholoscerritos.org

SAN DIEGO BOTANIC GARDEN

230 Quail Gardens Dr., Encinitas 92024
760.436.3036 www.sdbgarden.org

SOUTH COAST BOTANIC GARDEN

26300 Crenshaw Blvd., Palos Verdes 90274
310.544.1948
www.southcoastbotanicgarden.org

THEODORE PAYNE FOUNDATION

10459 Tuxford St., Sun Valley 91352
818.768.1802 www.theodorepayne.org

UC RIVERSIDE BOTANIC GARDENS

900 University Ave., Riverside 92521
951-784-6962 www.gardens.ucr.edu

 Yvonne Savio

See more events at: www.gardeninginla.net/submit-your-garden-events.

LINKS TO UPCOMING EVENTS & WEBINARS

Please check with individual organizations for class fees & details

South Bay Bromeliad Associates Annual Show & Sale

- **FREE** at Palos Verdes Art Center -
Saturday, August 6 from 10 a.m. to 4 p.m.

This event showcases bromeliads and offers specimens for sale from members' private collections and commercial vendors.

Proof of vaccination required. For details go to:
<https://pvartcenter.org/events/south-bay-bromeliad-associates-annual-show-and-sale/>

South Coast Cactus & Succulent Society's Feeding Succulents: A How-To Seminar with Ernesto Sandoval

- **FREE** with Paid Admission -
at South Coast Botanic Garden

Sunday, August 14 from 1:00 to 3:30 p.m.

Learn about special needs of cultivating succulents by adjusting fertilizer, water pH and soil conditions, and more.

Advance reservations required. Visit:
<https://southcoastbotanicgarden.org/>

UPDATE ON 2022 SCHS HORTICULTURIST OF THE YEAR EVENT

SAVE THE DATE! Saturday, September 17
Huntington Botanical Gardens

Photo provided by Dave Fross



We hope you will be able to join us for a celebratory evening as we gather to present Dave Fross, owner of Native Sons Nursery, with the SCHS Horticulturist of the Year award for 2022.

Doors open at 5:00 p.m. for socializing and bidding on Silent Auction items, and dinner will be served at 7:00. The award

ceremony begins at 8:15 and auction item winners will be announced thereafter. **Look for registration information being emailed to all members soon.**

SILENT AUCTION

The Silent Auction is a chance for guests to bid on and acquire interesting, unusual and often one-of-a-kind garden-themed items and plants, PLUS it serves as SCHS's main fundraiser of the year. If you would like to donate, start gathering your items now – submission details will appear in the September newsletter.

We'll see you there!





In person monthly meetings are held on the second Thursday of the month in the evening, **unless otherwise noted**. Address for live meetings is:

Friendship Auditorium

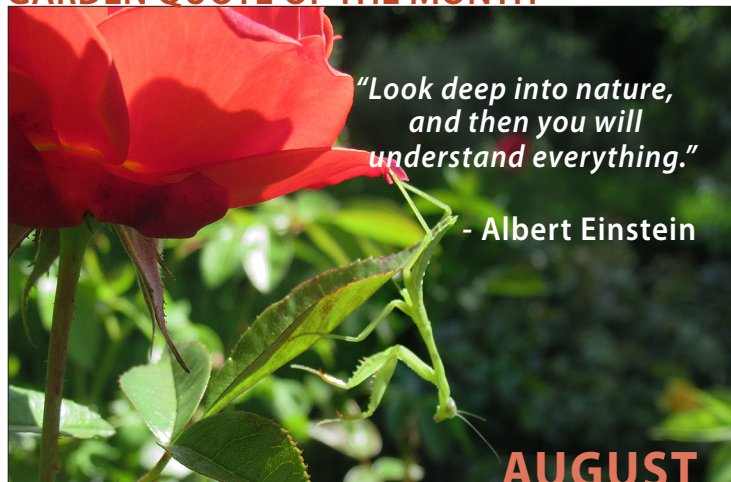
3201 Riverside Drive, Los Angeles CA 90027

NOTE: Meetings are simultaneously live-streamed and can be seen via Zoom with pre-registration.
(Please visit www.socalhort.org for more information.)

SCHS EVENTS CALENDAR

-  **August 11** *IN-PERSON*
Horticulturist and educator Katherine Pakradouni will be speaking about "Micro-Forests in Los Angeles"
-  **September 17** *IN-PERSON*
at Huntington Botanical Gardens
2022 Horticulturist of the Year Banquet & Silent Auction honoring Dave Fross of Native Sons Nursery
-  **October 6 *** *IN-PERSON*
at Huntington Botanical Gardens
* *NOTE: This meeting will be on the first Thursday of the month.*
Talk and tour with Gary Roberson at the new Cycad Garden
-  **November 10** *ONLINE*
"The Modern Crevice Garden: Going West with It" - a presentation by garden designer and author Kenton Seth

GARDEN QUOTE OF THE MONTH



SCHS BOARD & COMMITTEES

- Laura Bauer** - President, Finance Committee Chair, Website Chair, HOTY Committee, RBLs Committee and Voicemail
- Lili Singer** - Vice President, HOTY & Social Media Chair, Marketing, Board Nominations, PR & Publicity Committee, RBLs Committee, Archives
- Yoav Paskowitz** - Treasurer/Secretary, Finance Committee, Oral History Committee, Website Committee, Newsletter Copy Editor
- Carol Aronson** - Program Committee, Field Trip and Coffee-in-the-Garden Committees, HOTY Committee, RBLs Committee
- Carol Bornstein** - Program Committee Chair, HOTY Committee, RBLs Committee
- Aprille Curtis** - Social Media Committee, Plant Forum Supplies
- Steven Gerischer** - Oral History Committee, PHS Liaison, Silent Auction Coordinator
- Terence Huang** - TBD
- Elizabeth Mendoza** - TBD
- Steven Ormenyi** - Finance Committee, Voice Mail Recording
- Yvonne Savio** - Coffee-in-the-Garden Committee, Horticultural Happenings Contributor (Newsletter)
- John Schoustra** - RBLs Chair, Field Trip Committee, Finance Committee, Plant Raffle, Plant Sales (at meetings)
- Sabine Steinmetz** - Newsletter Editor, Garden Share, Graphic Design
- Layla Valenzuela** - TBD
- Jill Vig** - Oral History Committee Chair, Coffee-in-the-Garden Committee, Special Projects



Southern California
Horticultural Society
P.O. Box 94476
Pasadena CA 91109-4476

Contact us via mail, phone or social media:
818-567-1496 • www.socalhort.org • www.facebook.com/socalhort • www.instagram.com/socalhort

SUBMISSIONS TO NEWSLETTER

You may contribute an article of interest or information to be considered for publication in future issues.

Next deadline (for September newsletter): Monday, August 15

Newsletter Editor: Sabine Steinmetz • Contributors to this issue: Debby Dunn, Katherine Pakradouni, Yvonne Savio