



SOUTHERN CALIFORNIA HORTICULTURAL SOCIETY

Where passionate gardeners meet to share knowledge and learn from each other.

socalhort.org

NEWSLETTER

January 2022

OUR NEXT VIRTUAL MEETING

Thursday, January 13
Announcements at 7:10 p.m.
Plant Forum at 7:15 p.m.

Webinar at 7:30 p.m.



Visit: www.socalhort.org
for registration info.

SCHS WELCOMES NEW MEMBERS

*We rounded out our
membership for 2021
with the addition of:*

Julie Pittet

*We're looking forward to
"seeing" all members
- old and new - in 2022!*

CONNECT WITH SCHS

Please engage with us online!

YOU CAN FIND US AT:

www.socalhort.org
www.facebook.com/pg/socalhort
www.instagram.com/socalhort



*All membership options
are listed on our website.*

IN THIS ISSUE

January Program and Membership News	1
December Recap, Intern Report and Garden Share	2
Horticultural Happenings and Updated Live Events	3
Upcoming Programs and SCHS Contact info.	4

**NOTE: PENDING ONGOING DEVELOPMENTS WITH COVID VARIANTS
ALL MEETINGS WILL BE HELD VIRTUALLY UNTIL FURTHER NOTICE.**

Horticultural Therapy in Practice:

How Our Intrinsic Connection to The Natural World Can Help Heal Us

We welcome as our first webinar speaker of the new year, Arleen Ferrara, landscape designer and owner of Satori Garden Design in Los Angeles, who is also a horticultural therapy practitioner. During her 14 years in business, Ferrara has served on the board of the L.A. chapter of the Association of Professional Landscape Designers and become certified in permaculture. However, her interest in horticultural therapy began when she was putting her garden guru skills to work at the schools of her then-young children. She came to realize how powerful gardening was for children, especially those struggling with developmental delays or social challenges, and her experiences there led her into a secondary career in horticultural therapy.

Ferrara pursued her educational training in horticultural therapy through Colorado State University, and in 2013 she began an internship at Vista Del Mar Child and Family Services with the goal of becoming a registered horticultural therapy practitioner. During her time at Vista, Ferrara designed and developed two

large gardens and the horticultural therapy program that serves children and young adults with intellectual and developmental disabilities.

In this evening's virtual presentation, Ferrara will discuss what horticultural therapy is and where it is practiced, and she will share her experience using therapeutic horticulture with children. As stated on her website: "Horticultural therapy is practiced in many environments with many special populations - from schools to rehab facilities, for inpatient or outpatient mental health, as community based homeless support and so on. It is used to meet therapeutic goals and objectives whether they be for an individual or group." (Links to a list of books and organizations through which we can expand our knowledge in this field will be posted on SCHS's website following the program.)

We are pleased to usher in 2022 with a program celebrating the benefits all of us can derive from the world of horticulture, spiritually as well as physically. Join us online to learn about this important field of horticulture as we welcome a new year in the garden. Registration is now open at: www.socalhort.org.



MEMBERSHIP NEWS

RETURN OF RUTH BORUN LECTURE SERIES

In February, the SCHS will present the second program in the Ruth Borun Lecture Series, with featured speaker Suzanne Simard, author of *Finding The Mother Tree*. Details for this webinar will be coming soon, but meantime:

SAVE THE DATE

Thursday, February 10

See page 3 for more information



DECEMBER HORTICULTURAL YARD SALE RECAP

Our first-ever SCHS Horticultural Yard Sale at Baker's Acres in Tarzana on December 11 was fun, successful, and also a great way to come together safely outdoors. In addition to plants, there were pots, garden art, seedlings, books and more for sale in a beautiful setting.

We are grateful to Donna Marie Baker for opening up her unique nursery to give us an opportunity to try something new. Based on the responses from vendors and visitors, we are already planning on hosting another in 2022 -

Stay tuned for updates!

Keep up with SCHS online at:

www.socalhort.org
www.facebook.com/pg/socalhort
www.instagram.com/socalhort

In lieu of an in-person holiday meeting, SCHS's December 9 webinar with Lucinda McDade, California Botanic Garden's Executive Director and Linda Prendergast, head of the Native Designs volunteer group at CalBG, provided plenty of seasonal cheer. Their presentation – based on the book *California in a Vase* – was an “in-conversation” talk and instructive step-by-step arranging demo on how to create centerpieces using native plant materials.

California in a Vase, was written by David Bryant, former Director of Visitor Experience at CalBG, with a foreword by Susan Gottlieb. It features arrangements from both CalBG's Native Designs group and The Gottlieb Native Garden, celebrating the seasonal palettes of California native plants. Prendergast, an experienced florist and McDade, a plant scientist, both contributed to the book, and their teamwork was showcased in their collaborations in this presentation.

McDade began by crediting the inspiration for the book to the work done by CalBG's Native Designs Group along with Susan Gottlieb. She then introduced Prendergast, who created two beautiful arrangements during the webinar with both women narrating the process.

Prendergast's first arrangement was a seasonal centerpiece featuring a predominately yellow and gray palette. Before beginning, she described the tools she would be using and why they were essential, as well as how plant materials

are selected and harvested. She suggested gathering them early in the day to have fresh cuttings, and immediately putting them into fresh lukewarm water sprinkled with Floralife, Chrysal or some other powdered flower food. Next, she prepared a block of floral foam (see note at end of article) into which stems – stripped of any foliage that would be below the water line – are pressed and arranged for the desired effect. The block is cut to fit the container you will be using to hold the water, and secured with florist's tape. Working on a small turntable, Prendergast built her design from the bottom up, first inserting layers of foliage to visually hide the foam block, establishing the width and height of her arrangement. She left gaps into which were placed the showy parts of the centerpiece: yellow *Heteromeles arbutifolia* 'Davis Gold' berries, autumn *Quercus kelloggii* foliage, gray *Salvia apiana* stems, pink *Rhus ovata* berries, plus the yellow flowers of *Helianthus* and *Baileya*, the latter of which she had to secure with floral tubes due to their tender stems.



The second design was composed of a traditional “Christmas” palette and began with a red pillar candle in the center, surrounded by natural materials.



Prendergast followed the same construction process as before, beginning with greens, including *Calocedrus decurrens*, *Pseudotsuga menziesii* (with cones left on), *Pinus quadrifolia*, *Juniperus californica* and

finishing with red *Heteromeles* berries, always keeping the larger components lower in her arrangement.

Prendergast offered numerous tips during both demonstrations, but the most important was to change the water daily, and to refresh it throughout the day as the level goes down. This helps slow the decay of the plant materials and should help your arrangement last for about a week.

To learn more about CalBG and their planned 2022 “Arrange Wild” workshops on flower arranging, please check their website for all the latest information. And have fun creating your own masterpieces!

✂ Sabine Steinmetz



Click on link to view program and get all the designer's tips:

https://www.youtube.com/watch?v=1z8_LKGvEc

NOTE FROM THE SCHS BOARD

During the program, viewers raised concerns about the non-biodegradable floral foam being used. We plan to post more information and resources re: this topic online, but for now offer the following alternatives to consider using instead:

Decomposable Blocks

<https://agra-wool.nl/bloemisten/>

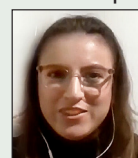
Floral Frogs

<https://www.hhfshop.com/collections/arranging-tools>

Other ways to secure arrangements include pebbles, marbles and even chicken wire.

SCHS 2021 INTERN

As a non-profit, part of SCHS's mission is to provide educational opportunities to horticulture students through sponsored internships at various institutions.



In 2021, Marisa Virgen, a recent graduate of Mt. San Antonio College with an A.S. in Ornamental Horticulture, completed an internship at the campus nursery. There she was tasked with identifying plants around both the Horticulture Unit and the Agriculture Building, and then making permanent labels for 126 plants on a Gravograph machine. Virgen was hired upon graduation and is currently working at the nursery.

Virgen's full presentation can be seen here: <https://www.youtube.com/watch?v=aMS8zYvvSsl>

✂ SCHS MONTHLY GARDEN SHARE ✂

Maintenance during dormancy is the name of the game in January!

- Complete winter rose pruning by the end of the month while they're dormant!
- Plant any new bare root roses.
- Stop cutting perennial shrubs because they won't be ready to push new growth and could sustain frost damage.
- If needed, have deciduous trees pruned by a professional.
- Harvest your citrus before the critters remove the fruits!
- Finish pruning cane berries and cut back grape vines.
- Keep your wildflower seedlings watered during dry spells.
- Do not fertilize this month - let your plants have a rest.
- Enjoy the bare bones of your garden and its seasonal charms!

✂ Sabine Steinmetz

Learn more about SCHS and check us out online at:

www.facebook.com/pg/socalhort • www.instagram.com/socalhort • www.socalhort.org

JANUARY HORTICULTURAL HAPPENINGS

**COVID RESTRICTIONS ARE ONCE AGAIN IN PLACE
FOR OUR MEETINGS & MANY OTHER VENUES!**

Venues open at press time are marked  and  for those that are online only.

Organizations and venues are offering events and classes, both online and in person, while maintaining safety protocols, limited attendance and hours.

Please continue to check with your favorites for updated info if you are planning a visit.

ARLINGTON GARDEN

275 Arlington Drive, Pasadena 91105
626-578-5434
www.arlingtongardenpasadena.com

CALIFORNIA BOTANIC GARDEN

(formerly RANCHO SANTA ANA)
1500 N. College Ave., Claremont 91711
909.625.8767 www.calbg.org

CALIFORNIA NATIVE PLANT SOCIETY

SAN GABRIEL MOUNTAINS CHAPTER
1750 N. Altadena Dr., Pasadena 91107
818.398.5420 www.cnps-sgm.org

CALIFORNIA NATIVE PLANT SOCIETY

L.A. / Sta Monica Mtns Chapter / Sepulveda Garden Ctr
16633 Magnolia Blvd., Encino 91436
818-782-9346 www.lasmmcnps.org

DESCANSO GARDENS

1418 Descanso Drive, La Canada 91011
818.949.7980 www.descansogardens.org

EATON CANYON NATURE CENTER

1750 N. Altadena Dr., Pasadena 91107
626.398.5420 www.ecnca.org

FULLERTON ARBORETUM

1900 Associated Road, Fullerton 92831
657.278.3407 www.fullertonarboretum.org

HUNTINGTON BOTANICAL GARDENS

1151 Oxford Road, San Marino 91108
626.405.2100 www.huntington.org

LOS ANGELES COUNTY ARBORETUM

301 N. Baldwin Ave., Arcadia 91007
626.821.4623 www.arboretum.org

NATURAL HISTORY MUSEUM OF L.A.

900 Exposition Blvd., Los Angeles 90007
213.763.3466 www.nhm.org

RANCHO LOS ALAMITOS

6400 E. Bixby Hill Rd., Long Beach 90815
562.431.3541 www.rancholosalamitos.org

RANCHO LOS CERRITOS

4600 Virginia Road, Long Beach 90807
562.206.2040 www.rancholoscerritos.org

SAN DIEGO BOTANIC GARDEN

230 Quail Gardens Dr., Encinitas 92024
760.436.3036 www.sdbgarden.org

SOUTH COAST BOTANIC GARDEN

26300 Crenshaw Blvd., Palos Verdes 90274
310.544.1948
www.southcoastbotanicgarden.org

THEODORE PAYNE FOUNDATION

10459 Tuxford St., Sun Valley 91352
818.768.1802 www.theodorepayne.org

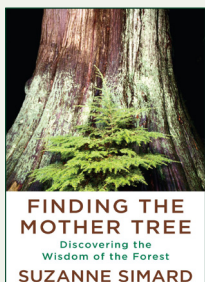
UC RIVERSIDE BOTANIC GARDENS

900 University Ave., Riverside 92521
951-784-6962 www.gardens.ucr.edu

 Yvonne Savio

See more events as they're posted at:
www.gardeninginla.net/submit-your-garden-events.

SCHS RUTH BORUN LECTURE SERIES - 2022 PROGRAM

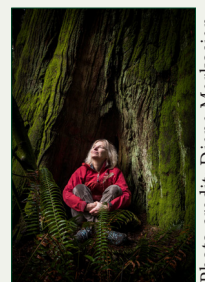


SUZANNE SIMARD

Professor of Forest Ecology at the University of British Columbia

- SAVE THE DATE -

Thursday, February 10, 2022 at 7:30 pm




Dr. Simard is the leader of The Mother Tree Project, which researches forest renewal practices that protect biodiversity against climate change. Her latest book, Finding the Mother Tree, brings us into the intimate world of trees, exploring the ways in which trees learn and adapt their behaviors, remember the past, demonstrate agency over the future, and cooperate with a sophistication typically ascribed to humans.

REGISTRATION INFORMATION TO BE POSTED SOON AT WWW.SOCALHORT.ORG


Link to purchase book here. For more information on this speaker, please visit prhspeakers.com.

PLEASE NOTE: This webinar will only stream "live" and NOT be available for repeat viewing on our YouTube channel. Only registered guests will be able to watch.

When we are able to resume in-person meetings they will be held at Friendship Auditorium, 3201 Riverside Drive, Los Angeles CA 90027. (Hybrids will be shown simultaneously online via Zoom and Facebook Live.)

 January 13 - Arleen Ferrara of Satori Garden Design in L.A. will speak on "Horticultural Therapy In Practice"

PLEASE NOTE: *This program was originally scheduled as a hybrid, but has been changed to a virtual presentation.*

 February 10 - SCHS presents RUTH BORUN LECTURE SERIES featuring Suzanne Simard (Details on Page 3)

PLEASE NOTE: *This program will **not** be recorded for future viewing.*

 March 10 - PROGRAM DETAILS BEING FINALIZED

GARDEN QUOTE OF THE MONTH

"Earth, I thank you
for the pleasure of your language...
feeling seeing smelling touching
- awareness
I am here!"

- Anne Spencer

JANUARY



Southern California
Horticultural Society
P.O. Box 94476
Pasadena CA 91109-4476

NEWSLETTER January 2022

John Schoustra - President, Field-Trip and Finance Committees,

Plant Raffle, Plant Sales (at meetings) and RBLS Chair

Steven Gerischer - Vice President, Oral History Committee,

Marketing, PR & Publicity and Silent Auction

Laura Bauer - Treasurer, Finance Committee, Website Chair,

HOTY Event Committee, Voicemail and RBLS Committee

Pat Steen - Membership Secretary, Recording Secretary,

Coffee-in-the-Garden Committee, Greeter

Carol Aronson - Field Trip, Coffee-in-the-Garden, Program,

HOTY and RBLS Committees

Carol Bornstein - Program, HOTY and RBLS Committees

Aprille Curtis - Social Media Committee, Plant Forum supplies

Fleur Nooyen - Program and RBLS Committee

Steven Ormenyi - Finance Committee, Voice Mail Recording

Yoav Paskowitz - Finance, Oral History and Website Committees,

Newsletter Copy Editor

Yvonne Savio - Coffee-in-the-Garden Committee, Horticultural

Happenings Events Contributor (Newsletter)

Lili Singer - HOTY and Social Media Chair, Marketing, Board

Nomination, PR & Publicity and RBLS Committees, Archives

Sabine Steinmetz - Newsletter Editor, Garden Share, Graphic Design

Jill Vig - Oral History Committee Chair, Coffee-in-the-Garden

Committee, Special Projects

Connect with us at: **818-567-1496** • socalhort.org •
facebook.com/socalhort • instagram.com/socalhort

Newsletter Editor: Sabine Steinmetz

Contributors: Arleen Ferrara, Yvonne Savio

Next deadline: Monday, January 17 (for February newsletter)

Please contribute an article or information of interest.